

Long Distance Metal Detecting Sensor

SNOOPER

SNOOPER is the exclusive and innovative solution for detecting the movement of an iron object from long distance away. SNOOPER can detect the movement of enemy's weapons or military vehicles those made of ferrous material at a long distance away. It does not react to wild animals or other moving object. SNOOPER can also be used to detect concealed weapons for public safety. Just a few SNOOPERS can prevent terrors or school shootings for the safety of citizen. It is the perfect tip-and-cue sensor and the smallest MAD sensor in the world.



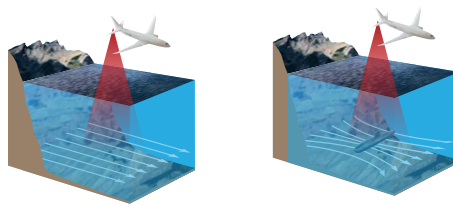
Long Distance Metal Detecting Sensor **SNOOPER**



SNOOPER is the exclusive and innovative solution for detecting the movement of an iron object (guns, rifles, etc) from long distance away. It can detect the sneaking movement of enemy forces in forest, and a Hummer from 15 meters away. SNOOPER is the perfect tip and cue sensor for military purposes and also can be applied to the anti-terror system for protecting good citizens from terrorist.

The smallest MAD sensor in the world

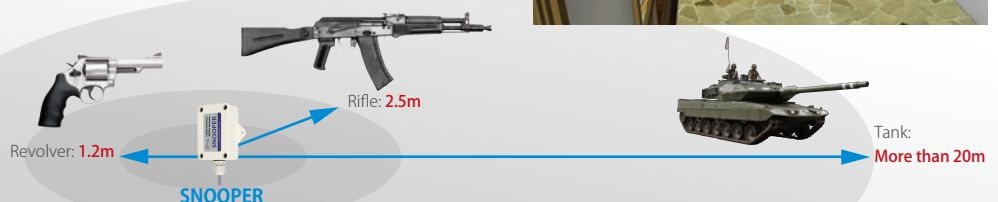
SNOOPER originated from MAD (Magnetic Anomaly Detector) sensor that used for detecting submarine under the sea, which is applied of Josephson effect on extremely low temperature. It needs a big cooling system and energy, and even costs very high.



MAGO technology completely re-designed the conventional MAD sensor using another principle, and finally made the smallest MAD sensor (SNOOPER) in the world. SNOOPER has the unique magnetic sensor structure of hybrid system(analog + digital), and also adopted with cutting edge technology of digital signal processing algorithms to detect nano level perturbation of Earth magnetic field. SNOOPER is more sensitive than any other conventional magnetic instruments about 1000~10,000 times except SQUID.

Detection distance of SNOOPER

SNOOPER can detect the movement of Hummer from 15 meters away, and a rifle of infantry from 2.5 meters. Just 3 SNOOPERS installed on the path through forest can block the surprise attack of enemy forces. The detection range is proportional to the size of the moving iron materials.



SNOOPER for military application

For military purposes, SNOOPER can detect the armed forces approaching our barracks at night, troops passing the strategic position, which are impossible by conventional sensors. Conventional motion detect sensors such as PIR or vision sensor cannot be used for outdoor places because they always react to the movement of branch, falling leaves and wild animals. A Hummer can be detected from 15m away by SNOOPER, so one of the sensor can cover up a 30m wide road. SNOOPER is the most efficient tools for building the invisible detection fence.



Stop school shooting, Save our children!

Just 2 or 3 SNOOPERS can stop the man who has a revolver from entering school. One of good point of SNOOPER is that people does not feel uncomfortable at all, and even they do not notice that they just passed a security check system, so it is possible to build up faster inspection system than the conventional device more than 10 times.



MAGO
technology

MAGO Technology co., Ltd.

430 Gangnam-bldg., 647 Eonju-ro,
Gangnam-gu, Seoul, Korea

sales@magotec.com

www.magotec.com